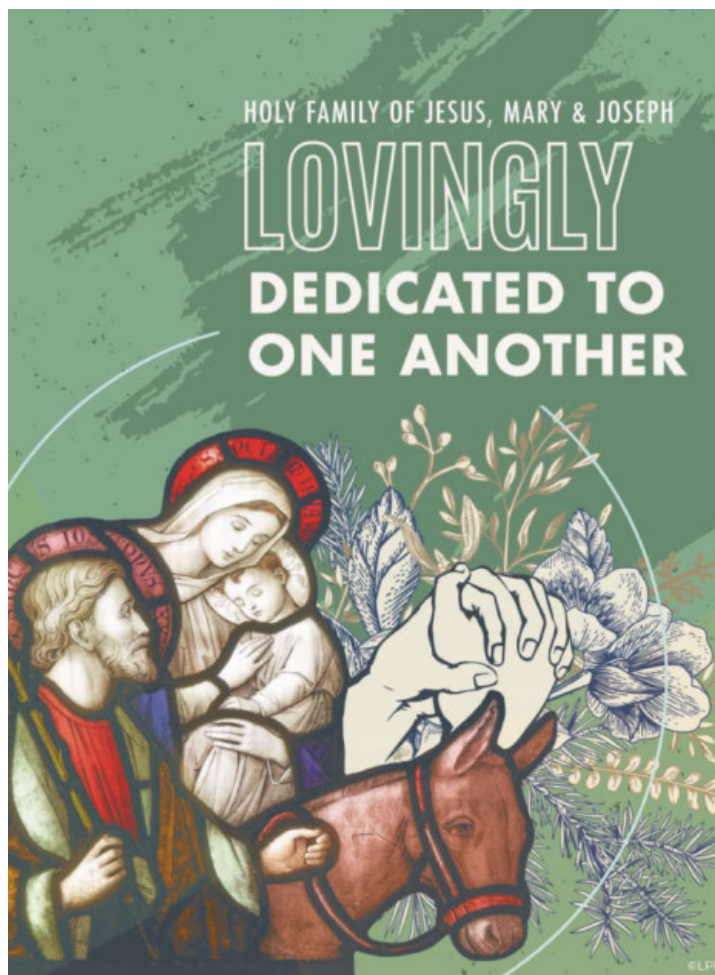


December 29, 2024



St. James is here to help all people experience meaning and purpose in life.

Lord's Day Masses

Saturday 4:30 pm
Sunday 8:15 & 10:30 am

Weekday Masses in the Historic Chapel

Wednesdays & Fridays at 8:00 a.m.

Individual Reconciliation

Reconciliation Room: Saturdays 3:45-4:15 pm

Eucharistic Adoration in the Historic Chapel

Tuesdays, 8:30 am—4:00 pm
Holy Hour & Rosary 4:00 pm—5:00 pm on Tuesdays
Also, Saturday from 7 am-8 am



Saint James Parish

W220 N6588 Town Line Road • Menomonee Falls, WI 53051

<https://www.stjames-parish.com>

Parish Staff Directory

General Parish Email stjameschurch@bizwi.rr.com

Administrative Office in St. James' rectory 262-251-3944

Parish Office Hours Monday—Friday, 7:30-3:30

Reverend John D. Hemsing, Pastor

262-253-2212 jhemsing@stjames-parish.com

Deacon Lance Tappa

262-253-2241 ltappa@stjames-parish.com

Barbara Schuelke, Director of Liturgy & Music

262-253-2225 bschuelke@stjames-parish.com

Terri Weber, Director of Administrative Services

262-253-2259 tweber@stjames-parish.com

Michelle Beimborn, Administrative Assistant

262-253-2235 mbeimborn@stjames-parish.com

Miriam Lezama, Administrative Assistant

262-253-2213 mlezama@stjames-parish.com

Christian Formation Office 262-251-0897
Enter NW side door of Church

Sunday 8:00 am - noon

Tuesday 8 am - 8 pm,

Monday, Wednesday, Thursday & Friday 8 am—4 pm

Sue Devine Simon, Director of Christian Formation and Adult & Family Ministry

262-253-2904 sdevine-simon@stjames-parish.com

Kristin Kebis, Child Ministry Coordinator

262-253-2908 kkebis@stjames-parish.com

Amy Ruege, Administrative Assistant

262-253-2902 aruege@stjames-parish.com

Health Ministry

Kristen Winter, Pastoral Health Care Coordinator

262-250-2663 kwinter@stjames-parish.com

Maintenance Department

Mike Gast, Facilities Manager

262-250-2660 maintenance@stjames-parish.com

After Hours 262-389-6089

Sean Hutchinson

OUTREACH

Sussex Food Pantry

N64 W23760 Main Street 262 246-9860

Mondays 5:30 to 7:00 pm

Wednesdays 1:00 to 2:30 pm

Saturdays 10:00 to 12:00 pm

Donations can be dropped off Mon-Fri between 10 & Noon

St. Vincent de Paul 262-251-3944

ERAs Senior Network - Waukesha 262-549-3348



We would like to express our sympathy to the family of **Patricia Ziegler**. May she find peace and happiness with our Lord Jesus in heaven.

MASS INTENTIONS FOR THE COMING WEEK

Wednesday, January 1 - Holy Day of Obligation

9:00 am †Harold Schroeder (Family)

Friday, January 3

8:00 am †Mary McCluskey (Family)

Saturday, January 4

4:30 pm †Mary Gruber (Don Gruber)

Sunday, January 5

8:15 am St. James Parishioners

10:30 am †Allen Lebeck (Delores Lebeck)

†Diane Cowan (Bob Cowan)

READINGS FOR THE WEEK OF DECEMBER 29

Sunday: 1 Sm 1:20-22, 24-28/Ps 84:2-3, 5-6, 9-10 (see a)/
1 Jn 3:1-2, 21-24/Lk 2:41-52

Monday: 1 Jn 2:12-17/Ps 96:7-8a, 8b-9, 10/Lk 2:36-40

Tuesday: 1 Jn 2:18-21/Ps 96:1-2, 11-12, 13/Jn 1:1-18

Wednesday: Nm 6:22-27/Ps 67:2-3, 5, 6, 8 (2a)/Gal 4:4-7/
Lk 2:16-21

Thursday: 1 Jn 2:22-28/Ps 98:1, 2-3ab, 3cd-4/Jn 1:19-28

Friday: 1 Jn 2:29—3:6/Ps 98:1, 3cd-4, 5-6/Jn 1:29-34

Saturday: 1 Jn 3:7-10/Ps 98:1, 7-8, 9/Jn 1:35-42

Next Sunday: Is 60:1-6/Ps 72:1-2, 7-8, 10-11, 12-13 (see 11)/
Eph 3:2-3a, 5-6/Mt 2:1-12

©LPi

Stewardship: Weekend of Sunday, December 15

Stewardship:	\$	20,904.00
Offertory	\$	1,283.43
Line of Credit	\$	625.00
Christmas	\$	265.00
Total:	\$	23,077.43

To make an online contribution: Text: 73256 Message is: STJMF

Thank you for your support of St. James!

January 1 - Feast of Mary Mother of God Holy Day of Obligation

There will be one Mass celebrated at 9:00 am on
January 1, in the main church.

Parish Offices Closed

All parish offices will be closing at noon on Tuesday, December 31, 2024 and will be closed all day on Wednesday, January 1, 2025.



PRAYER NETWORK

If you have a prayer request, please send an email to Terri Grimmer at: tmg1123@yahoo.com

If you would like to help us in praying for these requests please contact Terri so she can add you to her email list.

Year End Reminder

A few "business" things to remember as we approach the end of the year:

Parishioner donations received in the collection baskets the weekend of December 28-29 **will be applied to your 2024** parishioner contribution statement. **In person contributions will be accepted until noon on December 31st.** Any contributions received by mail must be **postmarked on or before December 31st** in order for it to be applied to your 2024 contribution statement.

Because of IRS rules we cannot make any exceptions.

THE 2025 PARISH FINANCIAL STEWARDSHIP LETTER & COMMITMENT CARD

All families should have received their 2025 financial commitment card and letter in the mail; if you didn't please contact the parish office. Please read the letter & brochure carefully and return your commitment card *before December 31, 2024.*

Reverse Collection

The Reverse Collection will be held on January 11th. & 12th Reverse Collection tickets will be handed out at Masses on January 4th & 5th. Each ticket lists 4 specific items the food pantry has requested. Below is a list of items needed if you are unable to pick up a ticket.

If you unable donate on January 11th or 12th, donations can always be dropped off at the food pantry, Monday through Friday between 10:00 AM and noon, or can be left in the barrels at Piggly Wiggly and Pick N Save.

Canned spaghetti/ravioli	Oatmeal
Hamburger Helper	Jelly/Jam
Canned Vegetables	Canned Fruit or Applesauce
Pasta Sauce	Bottled Juice
Sides: Pasta, Rice, or Potato	Deodorant
Stuffing Mix	Shampoo
Chunky Soup	Conditioner
Sloppy Joe Sauce	Toothpaste
Canned Chicken	Dish soap
Cereal: Life, Honey Nut Cheerios, Special K, Chex	



Thank you for your generosity and willingness to help Sussex Food Pantry help our neighbors in need.

Christmas Takedown

We will be taking down Christmas decorations in the church on **Sunday, January 5, 2025** at 11:30am
Many hands make the task easier. Please join us!



St. James Giving Tree

Thank you so much to the St. James community for the outpouring of support for our Christmas Giving Tree program. Your donations included over \$6,700 in gift cards, cash, and stamps, as well as 40 baskets filled with laundry and cleaning supplies and a plentitude of toys and gifts. These donations were all greatly appreciated by the organizations we sponsor: Sussex Outreach Services, St. Vincent DePaul Society, ERAS, and Hebron House. Your wonderful generosity helped so many in our community enjoy a blessed Christmas season. Thank you!!

December Tithes

LIFE'S CONNECTION - Support and resource center for anyone facing challenges related to childbearing, relationships, life losses and crisis care.

Family Missions Company For Matt & Katie Glafcke
Support for our lay missionary family from St. James so they may continue to serve as evangelists and servants to the poor around the world.

What Catholics Believe & OCIA...

Would you like to learn more about what Catholics believe? Discuss your faith? Come to the **Great room** to hear some different parishioners share their wisdom on different Catholic topics. We will meet next Sunday, January 5th between the 2 Sunday Masses from **9:20 – 10:20 am**.

Contact Sue at sdevine-simon@stjames-parish.com or call 262-253-2904 for more information.



Emmaus 90

Emmaus 90 is a 90-day journey from New Years to Easter 2025 that brings you closer to Jesus Christ through prayer and formation. It's a personal commitment to grow in holiness with the support of hundreds of fellow participants ("pilgrims") and the leadership of nationally recognized educators. Cost is \$20 per person/\$40 per family. If interested in joining contact Sue Devine-Simon at sdevine-simon@stjames-parish.com or 262-253-2904.

If I join, what do I get?

- Prompts for daily prayer with Scripture
 - Printed Guidebook journal & prayer card
 - Weekly guided formation sessions
 - Discussion guide for your small group
 - Holiness challenges (visit the Blessed Sacrament; serve someone in need)
- Community, discussion, Q&A and support

Adult Confirmation

Adult Confirmation sessions will begin on January 19th. If you are interested in learning more please contact Sue at sdevine-simon@stjames-parish.com or call 262-253-2904.



Please join us after all Masses next weekend for Fellowship, hosted by the FOCCUS team.

Enjoy a few treats and the fellowship of our parish family. Talk with our hosts and consider how you can share your talents.

ANOINTING OF THE SICK

JANUARY 11TH & 12TH

The Anointing of the Sick is a sacrament of healing appropriate not only for those in immediate danger of death but also for those suffering from chronic illness or preparing for surgery. The individual receives from the Holy Spirit the graces of "strengthening, peace, and courage to overcome the difficulties that go with the condition of serious illness or frailty of old age." CCC 1520

Anointing of the Sick will take place at St. James immediately following all Masses the weekend of January 11th & 12th. Parishioners will be invited to remain in their seats following Mass if they wish to be anointed.

If you are unable to attend on January 11th & 12th and wish to receive the sacrament, please contact the parish office.

Blood Pressure Screening

January 11th & 12th



The American Heart Association reports that nearly half of all Americans over age twenty have high blood pressure, which increases their risk of heart attack, stroke, and other health threats. High blood pressure usually has no symptoms, so it is important to have your blood pressure checked regularly.

Blood Pressure Ministry volunteers will be available in the Great Room to check your blood pressure following all Masses the weekend of January 11th & 12th.

WEEKLY SCHEDULE

Sunday, December 29	Mass at 8:15 & 10:30 am
Monday, December 30	
Tuesday, December 31	
Wednesday, January 1	Mass at 9:00 am
Holy Day of Obligation	
Thursday, January 2	
Friday, January 3	Mass at 8:00am
Saturday, January 4	Mass at 4:30 pm
Adoration 7:00 am	
Reconciliation 3:45 pm	
Reverse Collection Ticket Distribution at Mass	
Fellowship 5:30 pm	
Sunday, January 5	Mass at 8:15 & 10:30 am
CF K3/K4/K5 8:15 am	
OCIA 9:15 am	
Reverse Collection Ticket Distribution at Mass	
Fellowship 9:15 & 1130 am	
CF Gr. 1-5 9:30 am	
Art & Environment Take Down 11:30 am	
Confirmation Class 4:30 pm & 6:00 pm	
CF Gr. 6-10 4:30 & 6:00 pm	

St. James website has the current calendar for the entire year.

Schmidt & Bartelt Funeral Service

Providing Affordable Services at Your Church
or any One of Our Locations

GREG & CAROL DITTRICH • Parish Members

Menomonee Falls, (262) 251-3630
Sussex, (262) 246-4774

MAHUTA
TOOL CORP.

Tools / Dies / Die Repair
CNC Machining / CNC Turning
262-502-4100
www.mahutatool.com

Homestead
REALTY, Inc.

Thomas W. Becker
Associated Broker
(414) 531-7664
tombecker-re@sbcglobal.net



Parish Member

Kimberly Wenzel, EA

Tax & Accounting Management



- Enrolled Agent with the IRS
- Individual Tax Returns
- Business, Trust & Estate Tax Returns
- Bookkeeping & Accounting
- Quickbooks Certified
- Payroll Support

Parish Member

262-883-2007

N94W17900 Appleton Avenue
Ste 101
Menomonee Falls, WI

kimberly.wenzel@taxactmgmt.com

ADVANCED
Asphalt Paving

(262) 239-2015

Serving Germantown, Menomonee Falls, Sussex & the surrounding areas

Bilco
AUTO BODY & PAINT

COLLISION REPAIR

- Glass • Custom • Mechanical
- Rust Repair • AC • Loaner Vehicle (ask)

(262) 255-3610
N86 W16350 Appleton Ave.
www.bilcoautobody.com

LANGER
ROOFING & SHEET METAL INC.

langer-roofing.com

BUNZEL'S
Old Fashioned Meat Market

Fresh Custom Cut Choice Meats
Party Trays • Catering

Thank You For Supporting A Family Tradition
Parish Member

9015 W. Burleigh • 873-7960
www.bunzelmeats.com

POWERS & ASSOCIATES, L.L.C.
Life & Health Insurance Division

Robert M. Stolarczyk, Parish Member

Specializing in Medicare Supplement & Medicare Advantage Plans

Brookfield, WI Phone: 262-784-5583
Email: powrllc@exopc.com Cell: 414-550-0529

St. Ben's Community Meal
(3rd Wed. of the month)

Phone 262-227-9862
to donate food

Compliments of Ed and Mary Schlumpf
Parishioners

Sussex Ace Hardware
N64 W24330 Main St.
Sussex, WI 53089
Phone: (262) 246-3707
Fax: (262) 246-3338

ACE Hardware LeDonne Family
Parish Members

WE'RE HIRING!
AD SALES EXECUTIVES

BE YOURSELF.
BRING YOUR PASSION.
WORK WITH PURPOSE.

- Paid training
- Some travel
- Work-life balance
- Full-Time with benefits
- Serve your community

Contact us at
careers@4lpi.com or
www.4lpi.com/careers

GROSS
Heating & Air Conditioning

For all your heating & cooling needs.
3260 N 126th Street - Brookfield

262.783.6000
www.grossheating.com

FREE Estimates • 100% Satisfaction Guarantee

LET'S GROW YOUR BUSINESS
Place Your Ad Here
and Support Our Parish!

CONTACT ME
Dorothy Jaworska

Djaworska@4LPI.com
(800) 950-9952 x2105

POOLS, SPAS & SERVICE

Pool PARK
The Professional People

N88 W15192 MAIN ST., MENO. FALLS, WI 53051
SUSAN M. FORD (262) 255-3626
WWW.POOLPARK.COM

SCHRAMKA
Funeral Homes

A Catholic Family Tradition Since 1892

www.schramkafuneralhome.com
262-432-8100

IF YOU LIVE ALONE

MDMedAlert!™ As Low As
\$19.95 /mo.

- ✓ Ambulance ✓ Police/Fire
- ✓ Family/Friends ✓ GPS & Fall Alert

CALL NOW! 800.808.9294 • md-medalert.com

catholicmatch®
Wisconsin

CatholicMatch.com/WI

ISI
New and Existing
Residential Construction

INSULATION SPECIALISTS, INC. CHAMPION CORBOND

Jim Maas • Butler • 262-781-1971
www.myinsulationspecialists.com

Angie's list BBB NARI

Craig Coffey
Photography

craigcoffeyphotography.com
262-492-6395

YOUR PLACE OR OURS

262-781-3333 | EVENTS@DAVIANS.COM
N56W16300 SILVER SPRING DR.
MENOMONEE FALLS, WI 53051
DAVIANS.COM Amy Masterman

Davians
Catering & Events

FREE
AD DESIGN

with purchase
of this space

CALL
800-950-9952

**Place Your Ad Here and
Support our Parish!**

Instantly create and
purchase an ad with

AD CREATOR STUDIO

4lpi.com/adcreator